



House Special Committee on
Economic Development, Trade and
Tourism
October 25, 2007

PORT OF ANCHORAGE

Economic Development Opportunities

- Alaska Gas Pipeline
- Development of Rich Coal Deposits in Northwestern Alaska
 - More Red Dog Mines
 - Arctic Slope Regional Coal
 - Coal for Alaska Bush Villages
 - Rail Line Extension to the Arctic

PORT OF ANCHORAGE

Opportunities (Continued)

- Rail line extension needed to Point MacKenzie for export of goods from Interior Alaska
 - Bulk commodities – coal and mineral resources
- Rail extension to Canada through valuable military training grounds in Interior Alaska
- New shipping routes through Northwest passage

PORT OF ANCHORAGE Users



- Containers
- Petroleum
- Dry Bulk/Cement
- Cruise Ships
- Coast Guard
- Military



PORT OF ANCHORAGE

Annual Tonnage 1992-2005



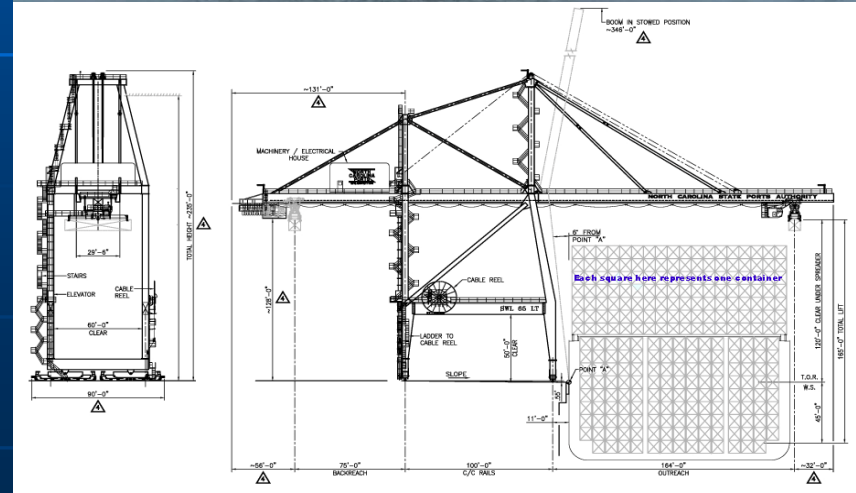
PORT OF ANCHORAGE

- Increase size by approximately 135 acres
- Add new structures
 - Administration building
 - Building for Coast Guard's Maritime Safety and Security Team
 - Maintenance Building
- New 100-guage cranes

PORT OF ANCHORAGE

New Crane Operations

- New Cranes will be 100 Foot Gauge
- Able to Reach 16 Containers wide
- 5 Truck Lanes



PORT OF ANCHORAGE

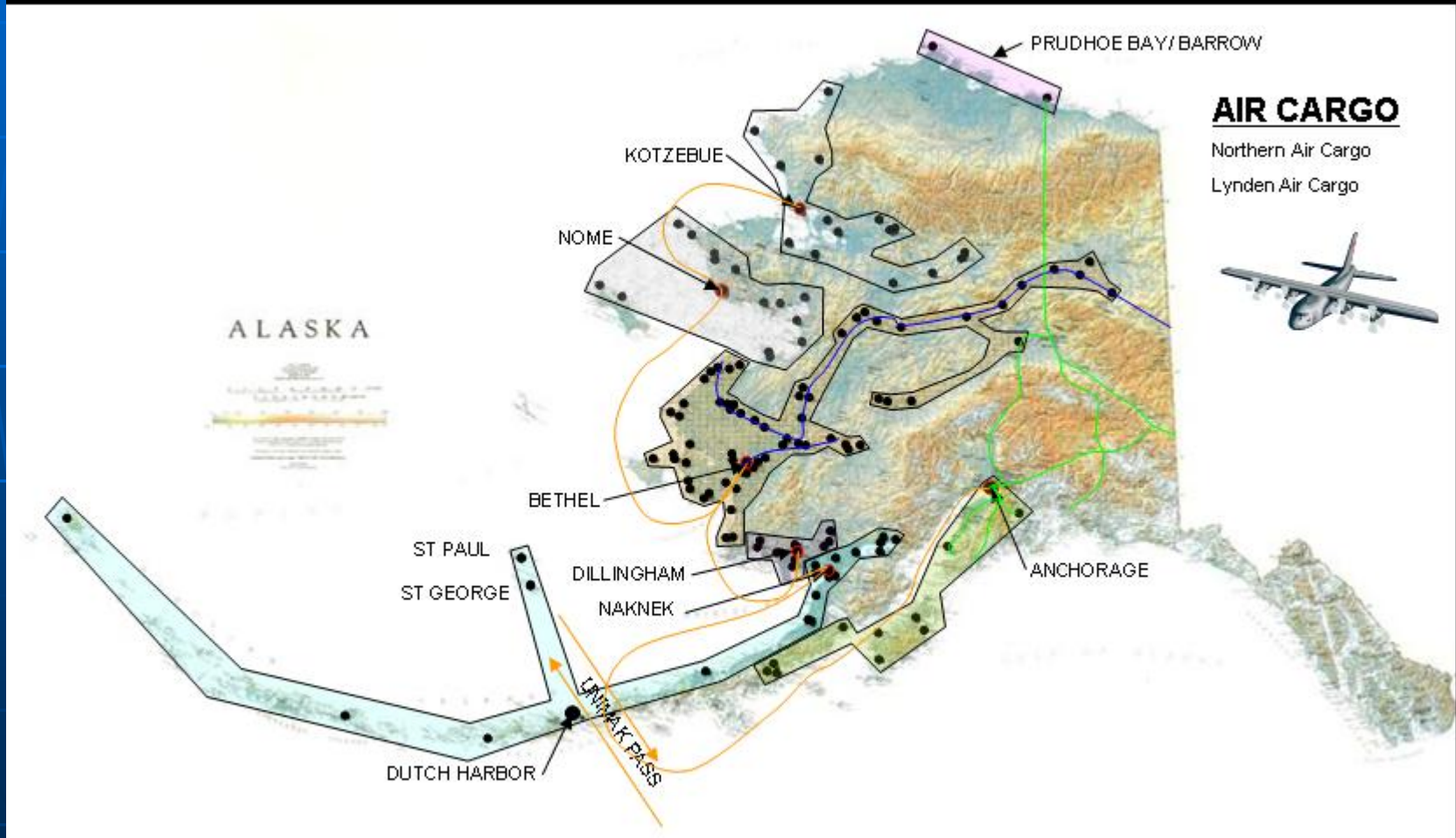
- Cost is estimated to be in excess of \$400 million
 - 52% Federal funds
 - Grants
 - 48% Local funds
 - Port profits
 - Equity funds through Revenue bond sale
 - State participation
 - Request of the upcoming Legislative Session is \$20 million

PORT OF ANCHORAGE

- POA serves 80% of the State's population with 90% of its consumer goods
- Provides all the jet fuel for Elmendorf Air Force Base
- Approximately 85% of the jet fuel for Ted Stevens Anchorage International Airport

PORT OF ANCHORAGE

Transportation Supply Routes From Port of Anchorage



PORT OF ANCHORAGE

2003 Pre-Construction

- U.S. Maritime Administration is lead federal agency
- I.C.R.C. is project management contractor
- Began environmental assessment and public scoping process
- Began data collection
- Negotiated lease with military

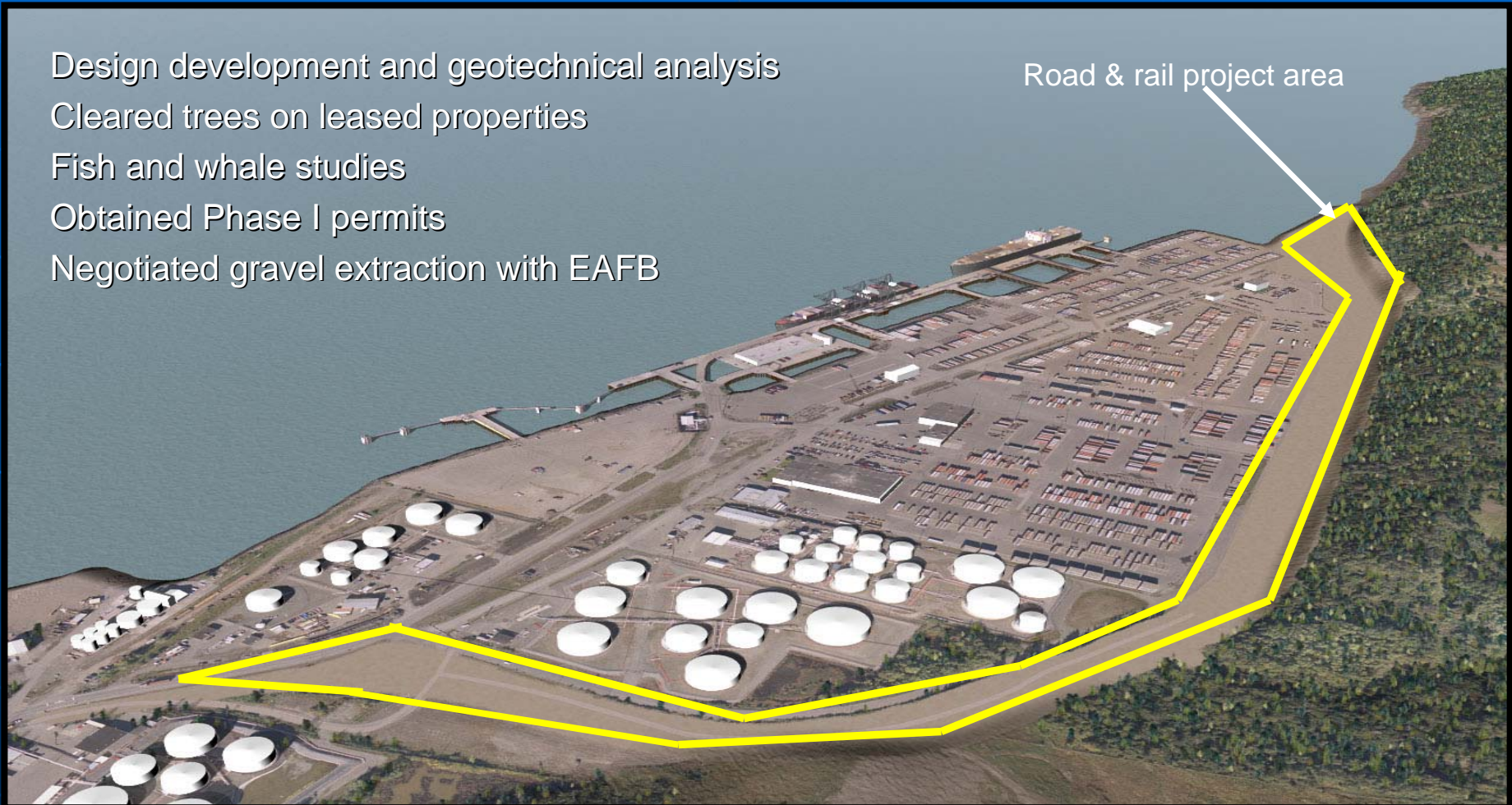


PORT OF ANCHORAGE

2004 Construction

Design development and geotechnical analysis
Cleared trees on leased properties
Fish and whale studies
Obtained Phase I permits
Negotiated gravel extraction with EAFB

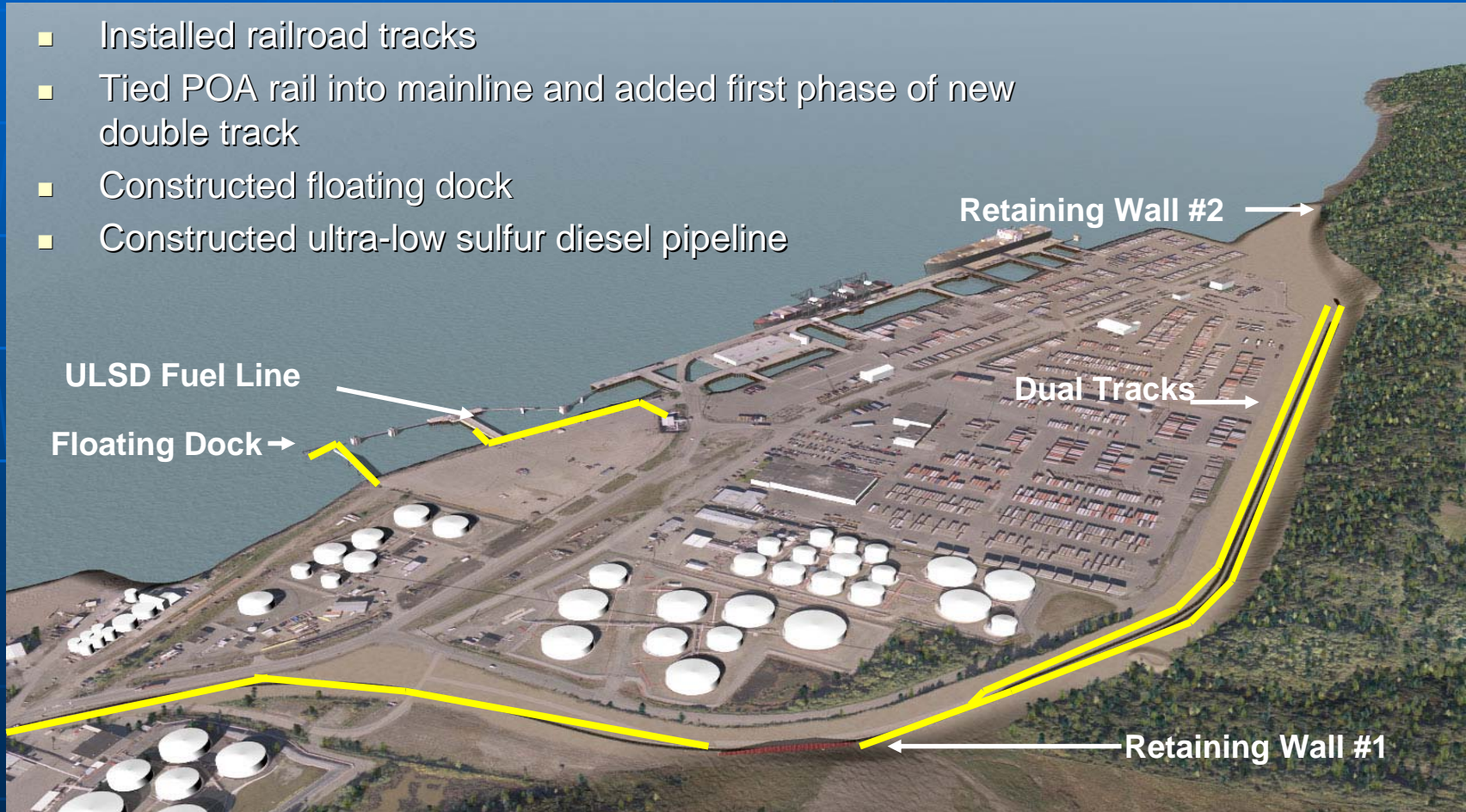
Road & rail project area



PORT OF ANCHORAGE

2005 Construction

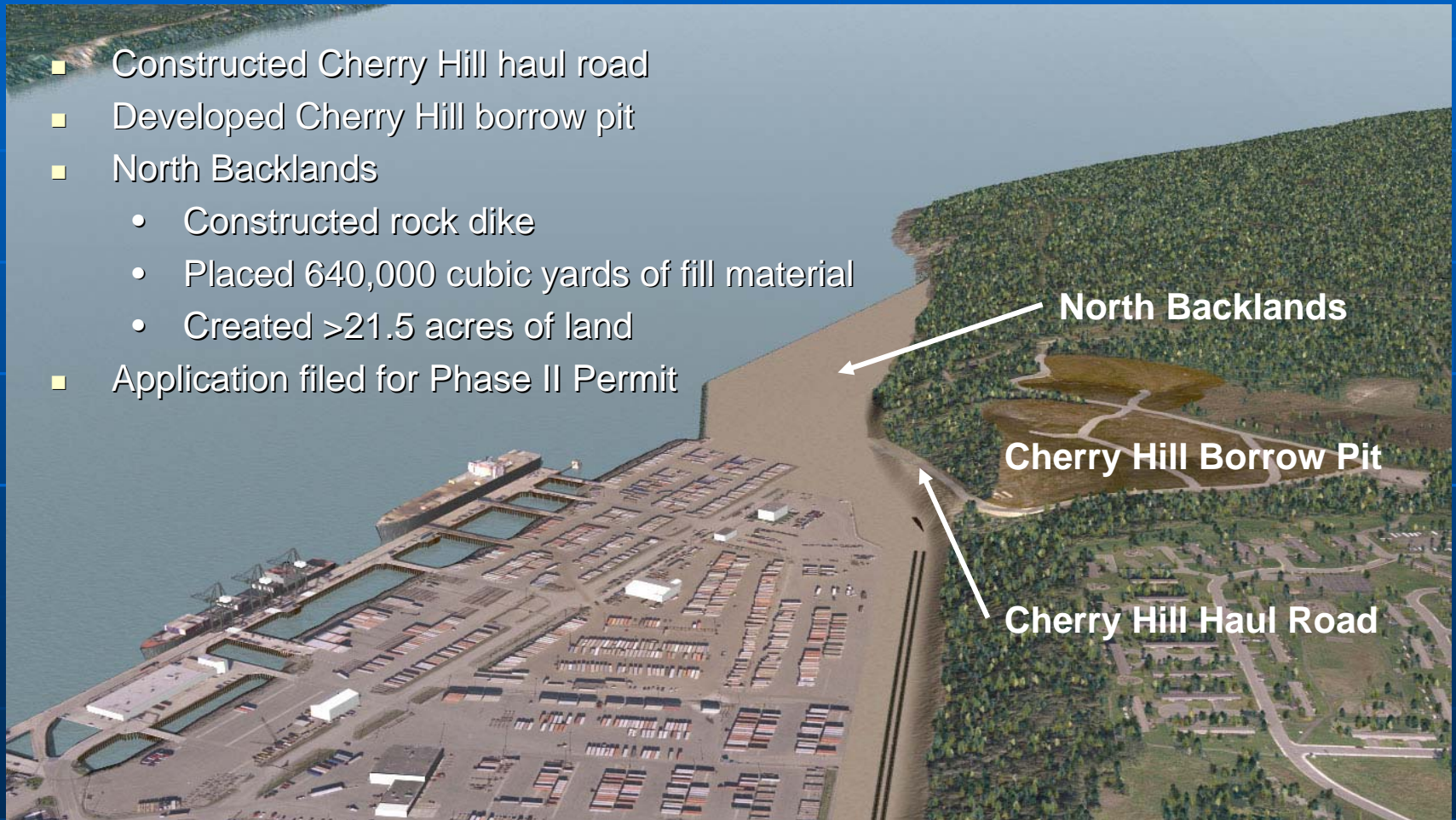
- Installed railroad tracks
- Tied POA rail into mainline and added first phase of new double track
- Constructed floating dock
- Constructed ultra-low sulfur diesel pipeline



PORT OF ANCHORAGE

2006 Construction

- Constructed Cherry Hill haul road
- Developed Cherry Hill borrow pit
- North Backlands
 - Constructed rock dike
 - Placed 640,000 cubic yards of fill material
 - Created >21.5 acres of land
- Application filed for Phase II Permit



North Backlands

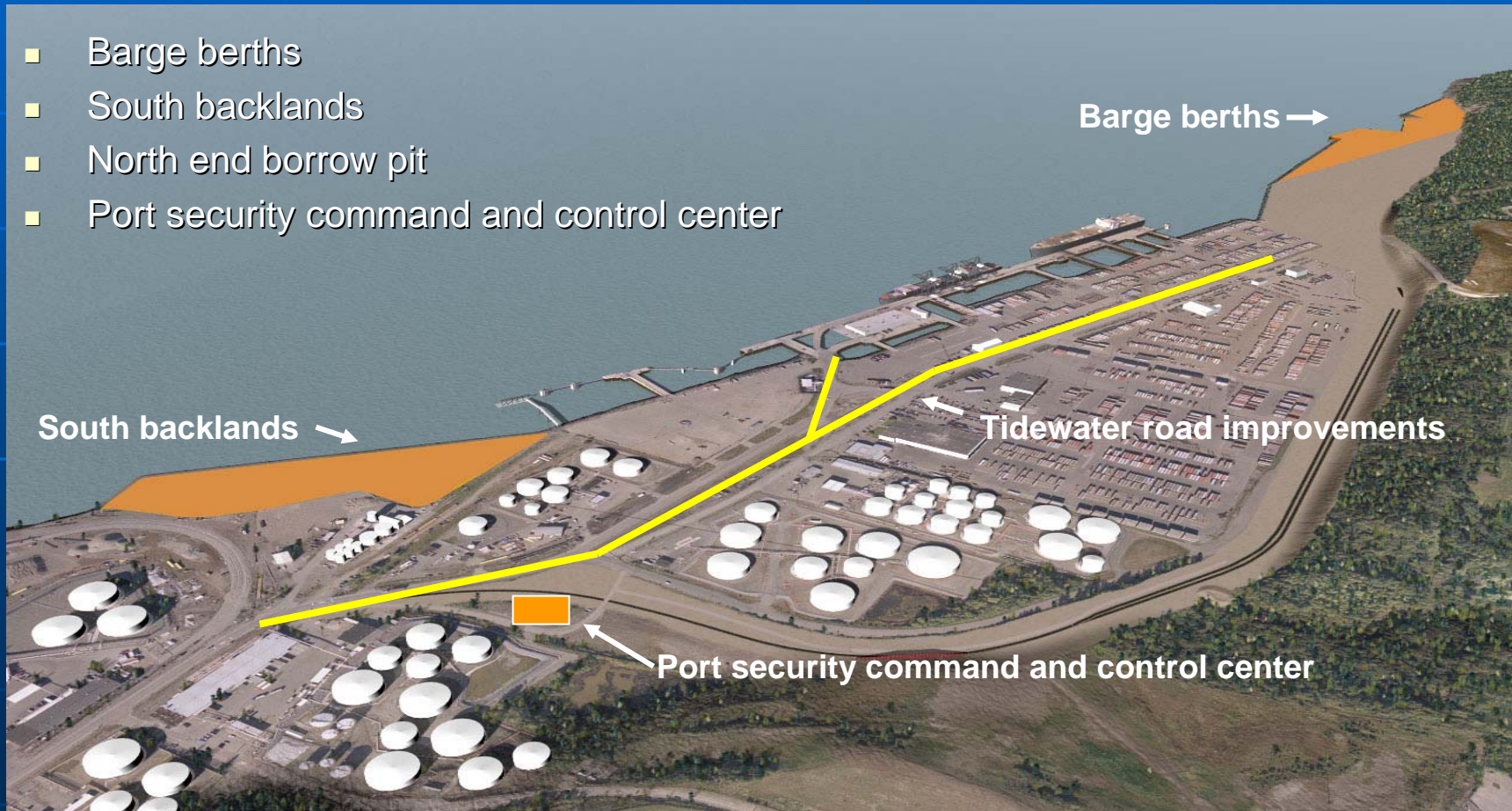
Cherry Hill Borrow Pit

Cherry Hill Haul Road

PORT OF ANCHORAGE

2007 Construction

- Barge berths
- South backlands
- North end borrow pit
- Port security command and control center



PORT OF ANCHORAGE

2008 Construction

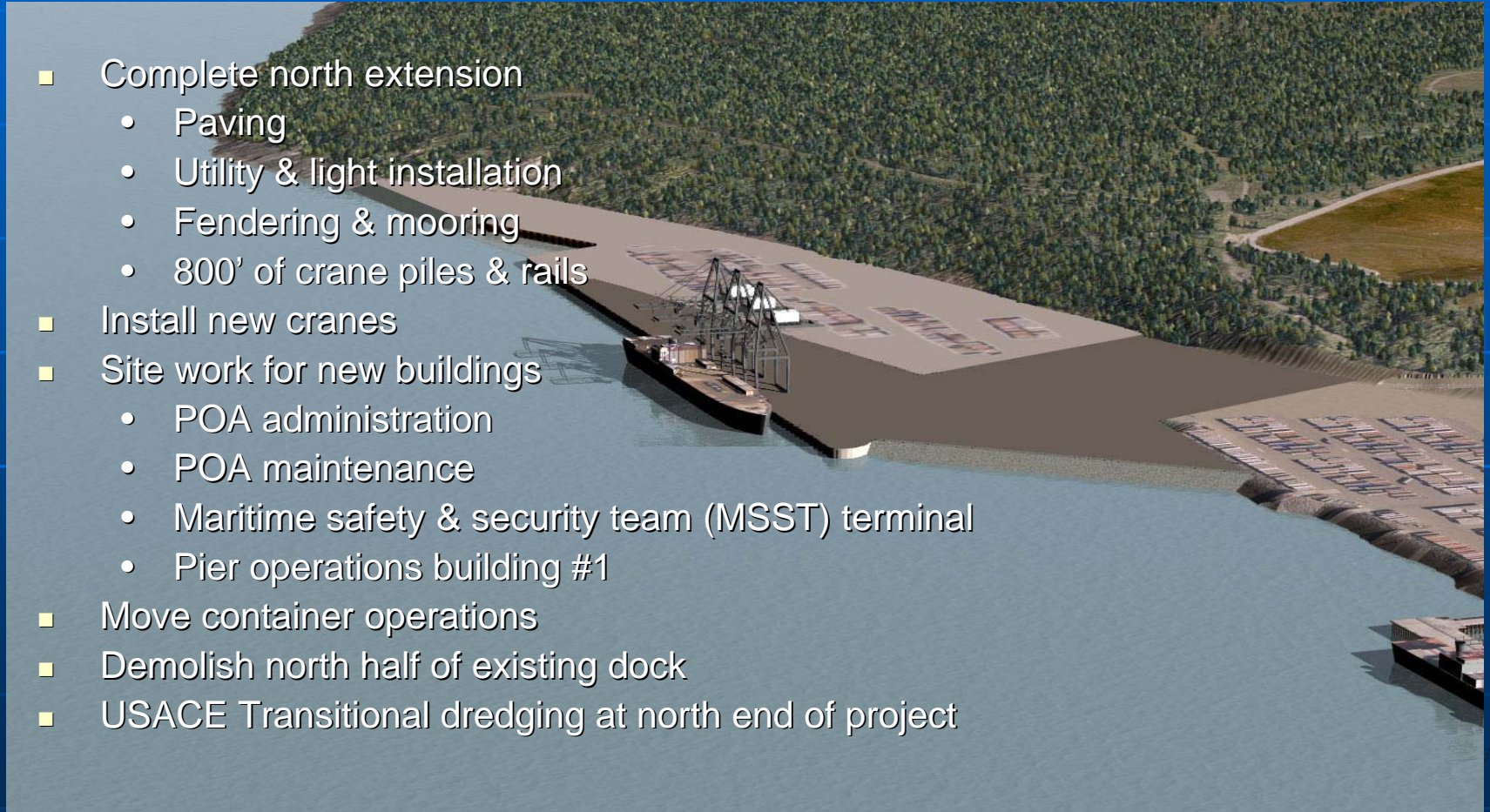
- Barge berth & South backland completion
 - Paving
 - Utilities & lighting installation
 - Fendering & mooring
- North extension underway



PORT OF ANCHORAGE

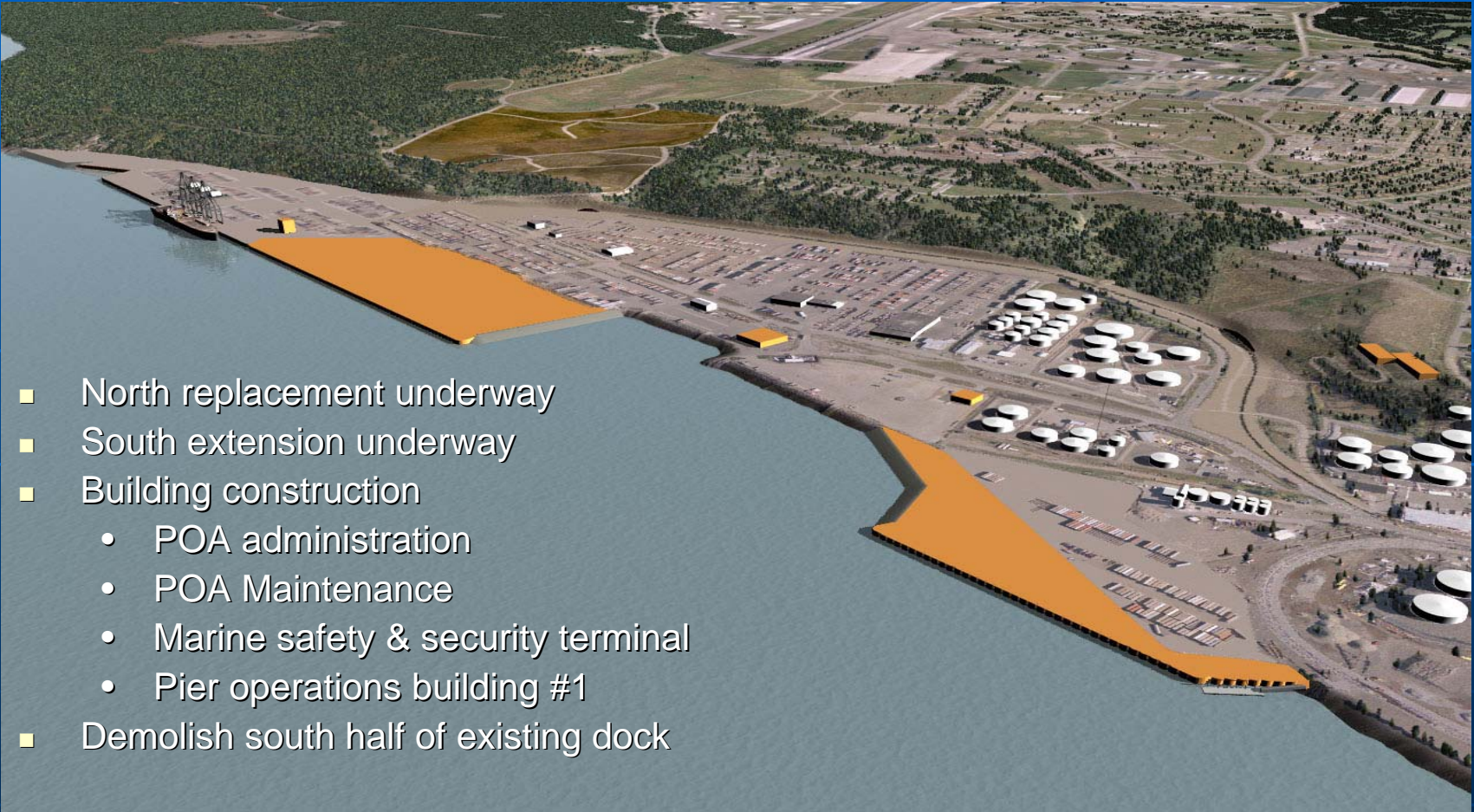
2009 Construction

- Complete north extension
 - Paving
 - Utility & light installation
 - Fendering & mooring
 - 800' of crane piles & rails
- Install new cranes
- Site work for new buildings
 - POA administration
 - POA maintenance
 - Maritime safety & security team (MSST) terminal
 - Pier operations building #1
- Move container operations
- Demolish north half of existing dock
- USACE Transitional dredging at north end of project



PORT OF ANCHORAGE

2010 Construction

- 
- North replacement underway
 - South extension underway
 - Building construction
 - POA administration
 - POA Maintenance
 - Marine safety & security terminal
 - Pier operations building #1
 - Demolish south half of existing dock

PORT OF ANCHORAGE

2011 Construction

- 
- North Replacement Completion
 - Paving
 - Utilities & lighting installation
 - Fendering & mooring
 - 2,000 ft. of crane piles & rails
 - South extension completion
 - Paving
 - Utilities & lighting installation
 - Fendering & mooring
 - South replacement underway
 - Site work for pier operations building #2

PORT OF ANCHORAGE

2012 Construction

- South replacement completion
 - Paving
 - Utilities & lighting installation
 - Fendering & mooring
- Pier operations building #2 construction
- USACE Harbor deepening
- Rail track extension



PORT OF ANCHORAGE

Before



After



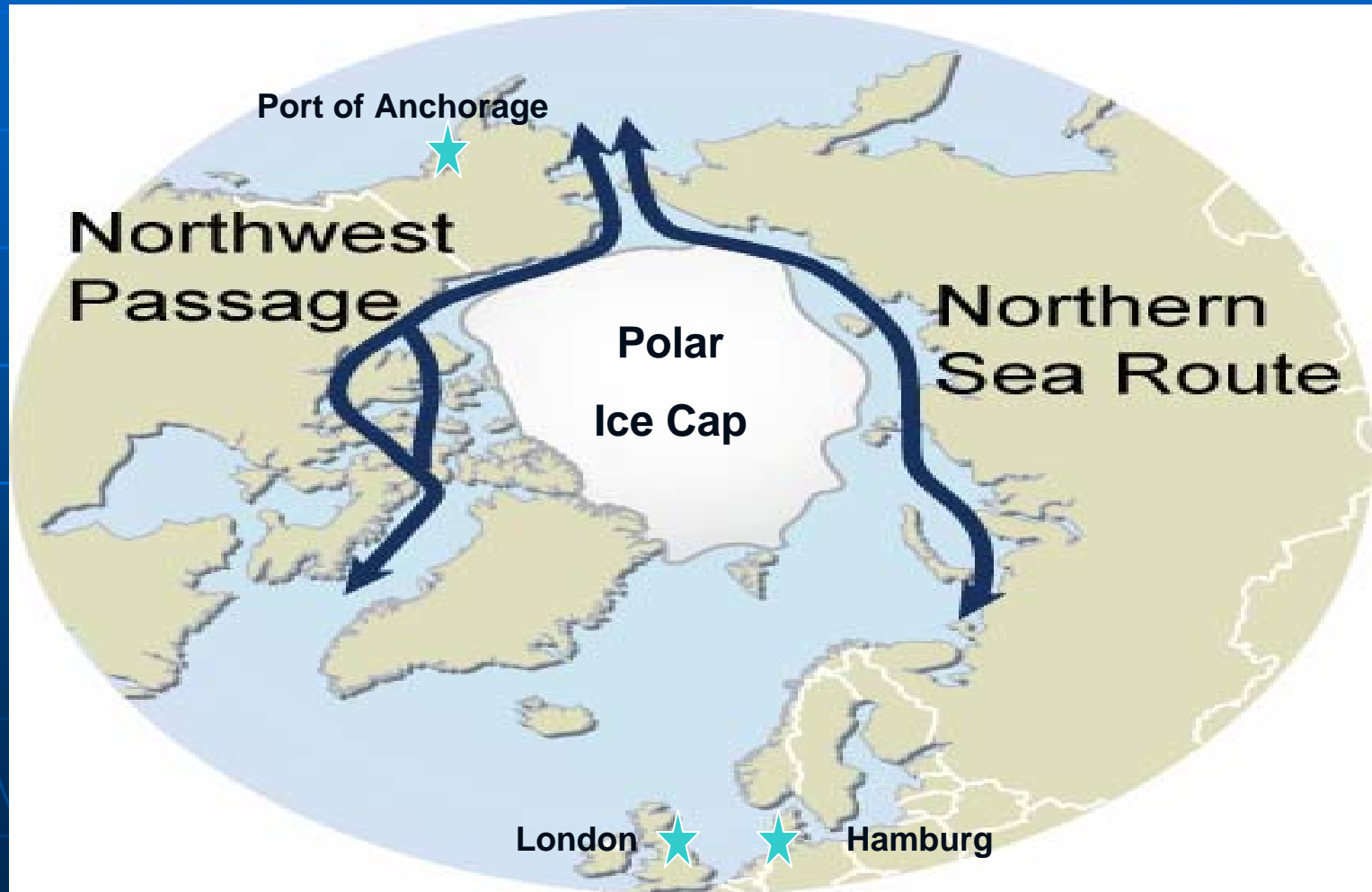
PORT OF ANCHORAGE



Melting Polar Ice Creates Future
Commercial Shipping Lanes from
Asia to Europe Via Northwest
Passage

PORT OF ANCHORAGE

Future Shipping Routes from Asia to Europe



PORT OF ANCHORAGE

Increasing Military Deployments



PORT OF ANCHORAGE

Supply Hub to the U.S. Military in Alaska



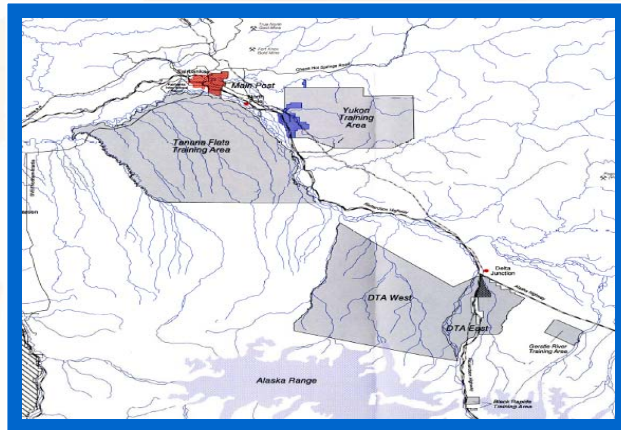
PORT OF ANCHORAGE

Haul Road

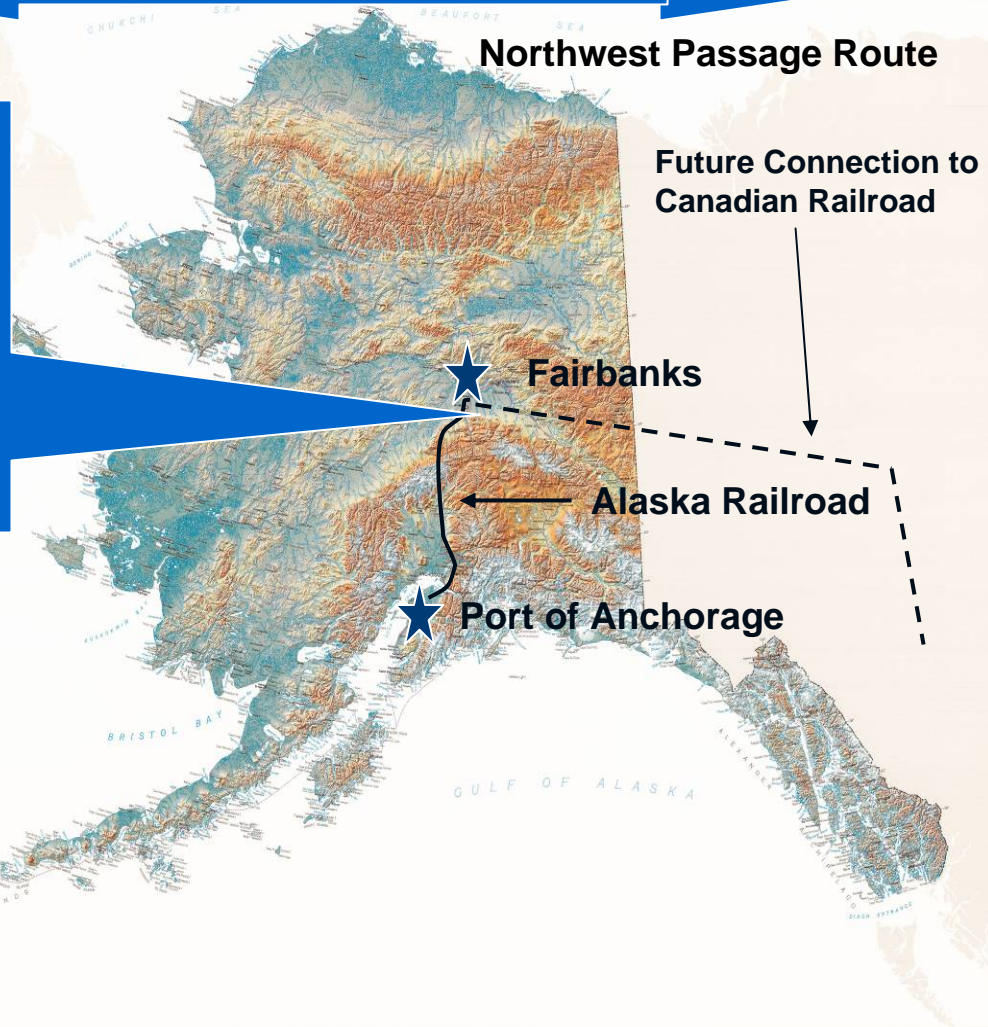


PORT OF ANCHORAGE

Supply Hub to Alaska's Military Training Grounds



Donnelly Training Area
Tanana Flats Training Area
Yukon Training Area



PORT OF ANCHORAGE

- POA will play key role in construction of an Alaska gas pipeline
- With project completion, POA will be a major intermodal (ship-rail-truck) staging facility for the pipeline from the North Slope to western Canada and the U.S.
- POA will have necessary acreage to provide loading, off-loading and storage of materials before eventual movement via our direct mainline rail link from the Port to Fairbanks

PORT OF ANCHORAGE

- Need Infrastructure in Alaska
- Upgrade Roads and Bridges for Gas Line Construction
- Federal Government is Cutting Back Aid to Alaska
- Alaska needs to Do More Without Federal Funds
- We Need Prioritized Roadmap to Follow for Future Development

PORT OF ANCHORAGE

- Thank you.
- Questions?